

Bug Bites

By Peter Stitche

The invertebrate order of *Trichoptera* or Caddisflies derives its name from the Greek *Trichos* meaning "Hair" and *Ptera* meaning "Wings" describing the hair covered wings of the adult.



WWW.ASCENTFLYFISHING.COM

June Fly of the Month



Elk Hair Caddis
Colors: Tan, Olive, Grey
Sizes: 14 - 20

A bread & butter fly pattern in every angler's fly box, the Elk Hair Caddis is a proven producer on both rivers and lakes, at every elevation, late spring through the fall. Valued for its excellent visibility on the water, buoyancy, and ability to match almost any caddis or moth species when fished in a variety of sizes and colors, the Elk Hair Caddis has been and remains our favorite and most effective adult caddis imitation!

By Peter Stitche

River Reports

Runoff is here! Most drainages are blowing out as a result. Fishing is tough right now, but not impossible. Insects are still hatching and fish are still feeding. You should target tail-waters for the best conditions, though you may find crowded banks when you get there. If you are brave enough to try big water bring the 4x and your biggest flashiest flies. Wherever you choose this month, please use caution around all waters.

Arapahoe Creek - 900 cfs at inlet

Arapahoe creek is one of my favorite spots to fish. The drainage between Granby Res. and Monarch lake is the best secret tail-water West of the continental divide. The beauty of the region alone is enough to make your day. Access from the Monarch side offers the best conditions right now. Midge (size 18-22), Mysis (size 14-18), stonefly(size 12-16), and San Juan(size 12-16) patterns should be all you need to get into the fish here.

Yampa River- 2400 cfs in Steamboat

The Yampa has a lot of water right now. However, the banks are covered in fishable soft water. Visibility fluctuates throughout the day but averages close to 5 feet. Some nice browns and rainbows can be found a foot off the bank. Approach the water slowly and work your nymph rig from the bank to the seam of soft and fast water. There is so much food for these fish right now they are not picky, but seem to be keying in on flies size 18 and larger. The most successful rig is a large stone up front with 1 or 2 size 18 rainbow warriors as your bottom flies.

Still waters

Still waters across the state are a great option during high flows. With rising water levels, fish are moving closer to the bank exploring new waters. Your standard nymph rig set as deep as you can go will produce fish right now. Mysis, San Juan's, and midges should be all you need to attract some fish.

By Weston Niep

June 2015

Fly of the Month



Bar Star Ranch Lake
South Park, Colorado

Happy Father's Day



W & **A** Wambolt & Associates
WEALTH MANAGEMENT PARTNERS

13976 West Bowles Avenue, Ste. 200
Littleton, CO 80127

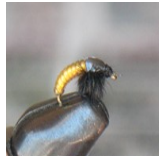
Phone: (720) 962-6700

Greg.wambolt@wamboltwealth.com
www.wamboltwealth.com

The Case For Caddis -Part 2

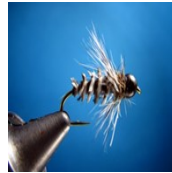
Having covered the life cycle and characteristics of each phase of the caddisfly in *The Case For Caddis - Part 1*, its time to get down to the brass tacks and talk flies! With caddis patterns outnumbering the naturals 10 to 1, the intent of this article is to equip you with my top ten patterns that can be used to match more species, on more waters, over a greater breadth of seasons.

Larva & Cased Patterns



Jelly Cord Caddis Larva
Dry/Wet: Wet
Fly Category: Generalist Pattern
Color: Yellow or Green
Hook Size: 14-18

Tied on hooks between size 10-20, both the naked caddis larva and its case-enclosed



Beadhead Breadcrust
Dry/Wet: Wet
Fly Category: Generalist Pattern
Color: Brown/Grey
Hook Size: 12-18

variations will most frequently be fished in sizes 14-18. While usually well-anchored to the bottom of the stream, both larva and cased caddis patterns become particularly effective during runoff or after an influx of water, which rises levels below a dam that can wash the juveniles free and make them



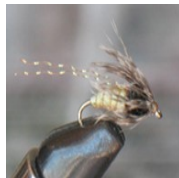
Better Buckskin
Dry/Wet: Wet
Fly Category: Attractor Pattern
Color: Tan with a Flashback
Hook Size: 12-16

Caddis Emerger Patterns

Spanning the distance from the bottom of the lake or river through the surface of the water, the emerging caddis pupae offers some of the most consistent productive action for the fly angler. Fished both wet or suspended halfway between the water and the air, caddis emergers should be fished as a dropper behind your favorite dry pattern. They can be equally deadly both dead-drifted or swung through the water, letting the current pull it to the surface like the natural making a break for the air. While tied in sizes 10-20, your most productive sizes will be 14-18 similar to the larvae.



Lafontaine Sparkle Emerger
Dry/Wet: Wet
Fly Category: Generalist Pattern
Color: Tan or Olive
Hook Size: 12-20



Chewy Caddis Emerger
Dry/Wet: Wet
Fly Category: Generalist Pattern
Color: Tan, Olive, Cinnamon
Hook Size: 12-16



X-Caddis
Dry/Wet: Dry / Wet
Fly Category: Generalist Pattern
Color: Tan or Olive
Hook Size: 12-20



Sedge Hammer
Dry/Wet: Dry / Wet
Fly Category: Attractor Pattern
Color: Tan with Mylar Abdomen
Hook Size: 14 - 18

Continued →

Adult Caddis Patterns

Without a doubt the most entertaining patterns to fish, the adult caddis flies will congregate around the water for several weeks, giving the fly angler ample opportunity to drop some dry flies on the water! The egg laying caddisflies are both showy and plentiful, dancing and fluttering across the water, diving beneath the surface to deposit eggs, and returning to the streams and lakes in numbers that can cover the surface. While the adults will be present in sizes 10-20, the most productive hook sizes will be between 14-20.

Elk Hair Caddis
Dry/Wet: Dry
Fly Category: Generalist Pattern
Color: Tan, Olive, Grey, Black, or Pearl
Hook Size: 10 - 20



Parachute Caddis
Dry/Wet: Dry
Fly Category: Generalist Pattern
Color: Tan or Grey
Hook Size: 12 - 18

Foam Caddis
Dry/Wet: Dry
Fly Category: Generalist Pattern
Color: Tan or Olive
Hook Size: 12 - 18



Armed with these ten go-to caddis patterns, you should be locked and loaded for action during every phase of the caddis hatch! Observe which life stage and pattern is receiving the most frequent strikes, and try tying on two or even three of this hot pattern to better imitate the swarms of caddis moving through or on top of the water.

By Peter Sticher